

**e-li**

**e-li** flyer

*The innovative fixing  
system for handrails  
in lifts*



## *When installing handrails is a problem*

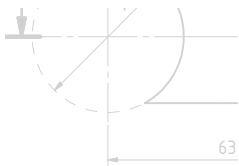
Installing handrails is usually one of the simplest jobs for an experienced lift installer.

When, however, the conditions on site only allow installation from within the cabin, the job rapidly becomes a challenge. This, for example, is the case with modernization of modularly constructed lift cabins or with small shafts that are difficult to access. A misaligned hole or lack of reinforcement on the cabin wall is all it takes to turn an otherwise simple installation into a real problem.

## *Patented innovation made in Germany*

BeLi GmbH has tackled this issue head on with intelligent innovation: the patented fixing system **e-li**.

**e-li** – which comes from “easy link” – combines the advantages of a simply installed and removed fixing system in one and is integrated directly into the handrail. The handrails are produced under stringent quality controls by BeLi GmbH in Germany. Manufactured using just-in-time techniques, the handrails and components can be supplied on short lead times.



A-



*e-li*

*Simply astounding –  
astoundingly simple*



## ***Your benefits when installing handrails in lifts with e-li***

- **Space problems solved**

Handrails with **e-li** are installed from inside the cabin.

- **Strong Spine**

With the **e-li** reinforcement solution, handrails are installed simply, rigidly and quickly – even on unreinforced cabin walls.

- **Irregularities allowed**

Hole misalignment and length compensation of up to 10 mm can be corrected during installation.

- **Design your way**

Whether it's stainless steel or wood, black or white, straight or curved, hand rails with **e-li** fit to your preferred design. Special solutions are also part of our standard offering.

- **Fast and flexible**

Individual handrail components are available from stock.

- **Broad product range**

The product range includes straight, curved, two and three-sided handrails as well as special solutions.

- **Quality made in Germany**

**e-li** handrails are manufactured in Germany to top quality standards by the family-run BeLi GmbH.



## ***e-li: installing handrails in lifts made simple***

Made by professionals for professionals: that's the philosophy that, step by step, led to each of the many **e-li** solutions. Each challenge in installing handrails in lift cabins has led to the development of new ideas that, together, constitute a comprehensive package of solutions. Whether straight, curved or continuous – with **e-li**, every handrail can be simply, quickly and solidly mounted from within the cabin. Even when there's no reinforcement available.

## ***That's what our customers say about e-li***

*„An ingenious handrail system, which is super easy to assemble.“*

Schindler Aufzüge AG, Schlieren Switzerland

## ***Our Customers***



**Schindler**



**Haushahn**



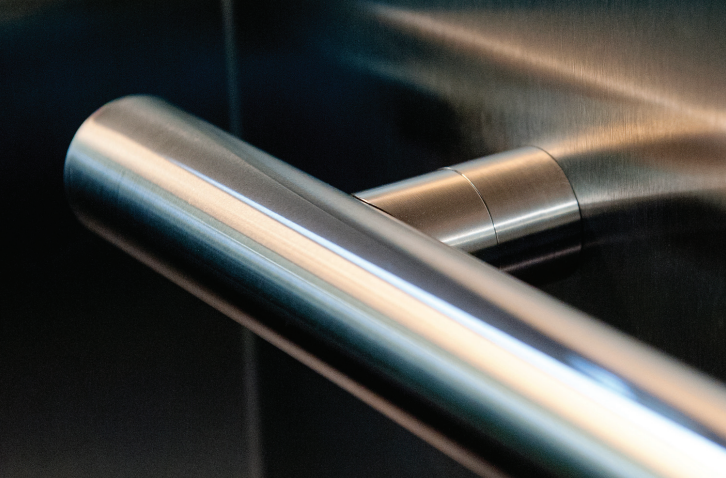
**KIESS**

INNENAUSBAU



**Åhmansi Åhus**





*Firmly fixed in an instant*



### *Technique and function*

Curved **e-li** handrails comply with DIN EN 81-70 thanks to **e-li** 's corner fixtting.



### *Features*

**e-li** handrails are installed without set screws and, thanks to the assembly aid, without holes.



### *Material and design*

**e-li** handrails are manufactured to your design and material requirement.



## *An **e-li** for every situation*

Regardless of the challenges you're faced with when installing handrails in lifts, **e-li** gives you a simple, fast and rigid solution. Simplify the installation of every lift handrail with **e-li**. Find out more – we'll be happy to give you with a quotation for your needs.

## **Contact**



BeLi Maschinenbau GmbH  
Nordring 4  
DE-63500 Seligenstadt

Fon +49 (0) 6182 7740390  
Fax +49 (0) 6182 7740391

info@beli-gmbh.de  
www.beli-gmbh.de

For more information  
<http://www.beli-gmbh.de/fastening-with-e-li/>

All versions of **e-li** are registered in Germany.  
All information without warranty. Errors excepted. Date 11/2018.

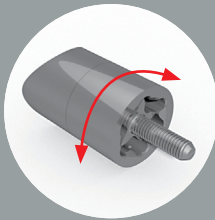


## INSTALLING FROM THE INSIDE



**CHALLENGE:** installation only possible from within the lift cabin.

**SOLUTION:** every handrail with **e-li** is installed from within the cabin. Quickly and simply without set screws.



**e-li**  
**Classic**

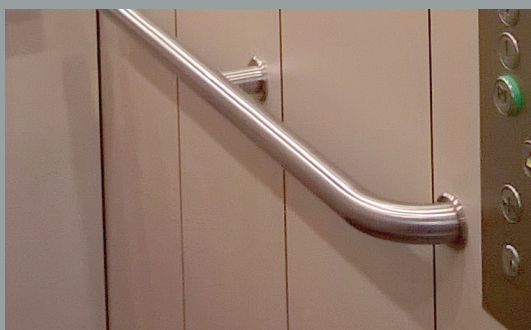
## MISALIGNED HOLES e-li



**CHALLENGE:** misalignment of fixing holes.

**SOLUTION:** **e-li** compensates for hole misalignment of up to 10 mm in any direction, while being tightened.

## CURVED HANDRAILS

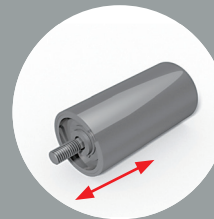


**e-li**  
**Corner**  
**Fitting**

**CHALLENGE:** installing curved handrails to DIN EN 81-70 with no gaps.

**SOLUTION:** with the **e-li** corner fitting, flush installation is achieved simply and quickly. Offsets are, of course, compensated for.

## MIRROR

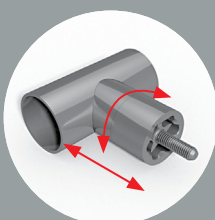


**e-li**  
**Snail**  
**Fitting**

**CHALLENGE:** handrail installation in front of mirrors and wall-to-wall or wall-to-door installations.

**SOLUTION:** even without supports, handrails can be quickly and simply installed in front of a mirror or two walls (including offset compensation) with the **e-li** snail fitting.

## CONTINUOUS HANDRAILS



**e-li**  
**Length**  
**Compensation**

**CHALLENGE:** continuous handrails with fluctuating cabin dimensions.

**SOLUTION:** using **e-li** with length compensation of up to 10 mm ensures simple installation of continuous handrails. The mounting supports retract into the tube for accurate installation.

## NO REINFORCEMENT



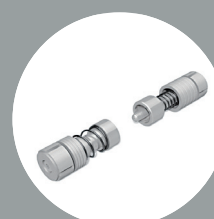
**CHALLENGE:** lack of reinforcement or support prevents rigid installation of the handrail.

**SOLUTION:** with the **e-li** reinforcement solution, handrails can be easily, quickly and rigidly installed from inside the cabin.



**e-li**  
**Strong**  
**Spine**

## LIMITED SPACE



**e-li**  
**Tube**  
**Connector**

**CHALLENGE:** large or continuous handrails where there's limited space inside the cabin.

**SOLUTION:** every handrail can be delivered in segments and simply assembled and installed using the **e-li** tube connector, without welding or grinding.

**e-li**  
**The Innovative**  
**Fixing System**